

BELVALKAR
— FUTURE • CULTURE —

Parichay



Welcome to Parichay, where every door opens to a new story,
Crafted by Belvalkar, it's a home where introductions blossom into glory.
Here, neighbors turn friends, and walls echo with laughter's sway,
In Parichay, life's moments find their place, day by day.

Belvalkar's touch brings spaces alive with the joy of meeting,
Where community thrives and every greeting is heartily fleeting.
It's not just homes but chapters beginning afresh, anew,
In Parichay, find your space, where every acquaintance feels true.

In this haven, every encounter weaves into the fabric of life,
Parichay is where connections are kindled, away from strife.
A canvas for new beginnings, painted with care and harmony's display,
Come, join the story that starts and stays, in Parichay.

Crafting Tomorrow's Heritage At Navi Peth



Modern Living, Time-Honored Elegance

Parichay by Belvalkar is a fresh take on luxury living in the classic neighborhood of Navi Peth. Offering 3 & 3.5 BHK homes, it combines the ease of modern living with the charm of old Pune. Each home here is designed with care, ensuring a life of convenience and elegance in the city's cultural heart. Right at Navi Peth, Parichay gives you the best of Pune's vibrant life. Here, tradition and modernity live side by side, in homes built for today's families with an appreciation for yesterday's values.

Choose Parichay for a life wrapped in sophistication, right in the heart of Navi Peth, where every detail echoes a legacy of quality living. Welcome to Parichay, your new chapter in a historic setting.










Bridging Generations with Warmth & Welcome

In the cool shaded periphery of Parichay, the gentle laughter of Aiji and Ajoba blends with the innocent chatter of their grandchildren. It's a picture of timeless bonding, framed by the safe and welcoming arms of home. This is where the wisdom of age and the promise of youth come together, sharing tales and making memories. At Parichay, every corner, every moment is an opportunity to connect and create stories that span generations.



-  Gracefully designed entrance lobby with smart card access control system.
-  Personalized name plates and letterboxes for each apartment.
-  CCTV in all common areas, parking, and building periphery.

-  Decorative compound wall.
-  Individual solar water heating system.



FLAT TYPE : 3 BHK

RERA CARPET	ENCL. BALCONY	DRY BALCONY	OPEN BALCONY	TOTAL	
SQ. M.	SQ. M.	SQ. M.	SQ. M.	SQ. M.	SQ. FT.
101.47	11.55	3.77	6.08	112.87	1323



FLAT TYPE : 3 BHK

RERA CARPET	ENCL. BALCONY	DRY BALCONY	OPEN BALCONY	TOTAL	
SQ. M.	SQ. M.	SQ. M.	SQ. M.	SQ. M.	SQ. FT.
94.64	5.85	2.78	9.47	112.74	1214



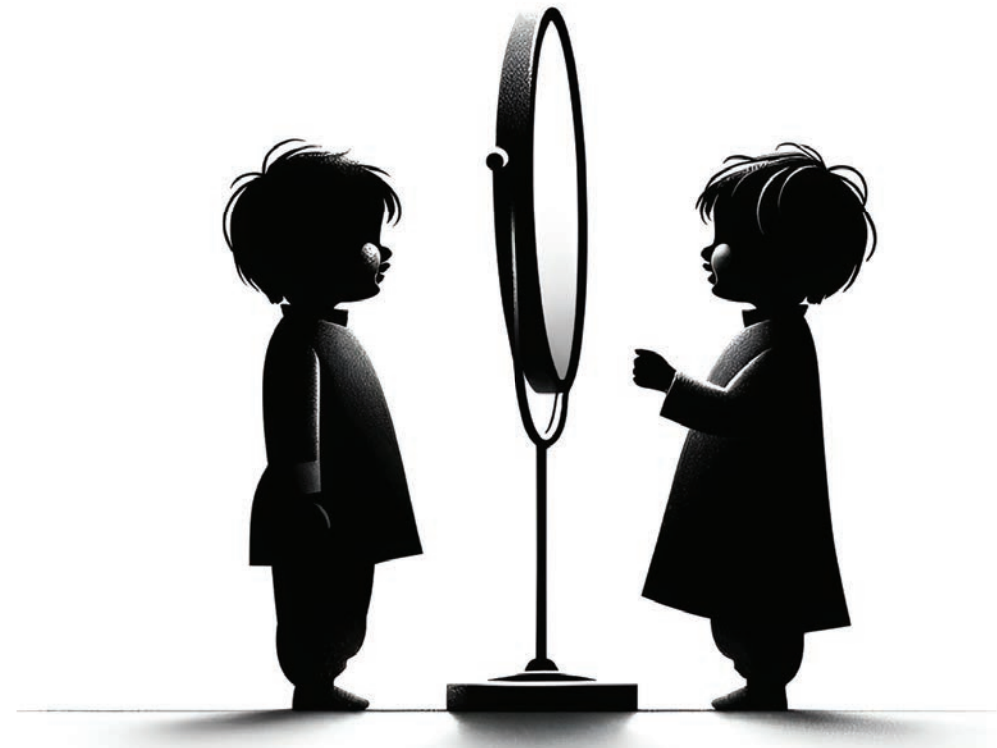
FLAT TYPE : 3.5 BHK

RERA CARPET	ENCL. BALCONY	DRY BALCONY	OPEN BALCONY	TOTAL	
SQ. M.	SQ. M.	SQ. M.	SQ. M.	SQ. M.	SQ. FT.
119.24	5.85	12.42	9.02	144.45	1555



FLAT TYPE : 3 BHK

RERA CARPET	ENCL. BALCONY	DRY BALCONY	OPEN BALCONY	TOTAL	
SQ. M.	SQ. M.	SQ. M.	SQ. M.	SQ. M.	SQ. FT.
86.16	4.67	2.65	8.46	101.94	1097



Reflecting True Selves: The Parichay Experience

In Parichay's mirror, simple moments shine. A child's gaze, full of wonder, meets another's, sparking stories in silence. Here, reflections are more than images; they're the quiet joy of growing up, captured in the glass of now and memories of tomorrow.

SPECIFICATIONS



Structure :

- Seismic resistance RCC structure with Anti-termite treatment.



Masonry :

- External Walls: Eco-friendly masonry in 125mm AAC blocks & Fly-ash bricks.
- Internal Walls: Eco-friendly masonry in 125mm AAC blocks/fly ash bricks.



Plaster :

- External Walls: Sand face plaster with waterproofing chemical.
- Internal Walls: Gypsum finish internally & P.O.P for ceiling.



Plumbing :

- Concealed plumbing with branded C.P. fittings (Jaguar or equivalent make).
- Wall hung European WC in all toilets (Jaguar/Simpolo/Parryware make).



Paint :

- Internal walls: Satin finish paint (Asian/Nerolac).
- External walls: Acrylic paint (Asian/Nerolac).



Flooring :

- 800x800 vitrified tiles flooring in all rooms.
- Colored glazed tiles dado in Kitchen & toilets.
- Satin finish ceramic flooring in toilets, balconies, and bathrooms.
- Granite Kitchen platform with stainless steel sink.



Doors and Windows :

- Main door: Both side laminated shutter with SS fittings and night latch fitted on Laminated door frames.
- Internal doors: Both side laminated shutter with SS fittings and cylindrical lock fitted on Laminated frames.
- Toilet & dry balcony doors: Both side laminated shutter with SS fittings and cylindrical lock fitted on natural stone frames.
- 3 track powder coated aluminum sliding windows with mosquito net and glass panels.
- Oil painted safety grills for windows.



Balcony Railing :

- SS handrail with 12 mm thick Glass



ROOFTOP AMENITIES

- 1. YOGA DECK
- 2. KIDS PLAY AREA
- 3. COMMUNITY LAWN
- 4. SITOUT
- 5. PANTRY
- 6. PARTY DECK
- 7. SOLAR DECK
- 8. PLAZA SITOUT



Parichay

F.P.NO.1000/6D, CTS NO.158/C/8, S.NO.721/1+725/2, NAVI PETH, PUNE-411030

Kothrud : 020 2998 5824
2ND floor, Kakade complex,
Karve Road, Kothrud, Pune-411038

Erandwane : 020 2545 6200
1175/1, 4th Floor, Nirmity Eminence,
Near Mehendale Garage, Erandwane, Pune - 411004

belvalkar.com | sales@belvalkar.com

Disclaimer : The brochure is an artistic impression of the proposed project and not a legal offering. The developer reserves all absolute rights to change, amend, cancel any plans/layout, no. of floors, amenities/specifications etc. at any time without assigning any prior notice. The final agreement to sale will supercede all offerings made here.



MAHA RERA NO. P52100055315